

DATA CENTER CONSTRUCTION

volume 1.0



**Complete Safety Solutions
Throughout Data Center Construction**

ACCUFORMNMC
Justrite Safety Group

BCI
BASIC CONCEPTS INC.
Justrite Safety Group

CHECKERS
Justrite Safety Group


EAGLE
Justrite Safety Group

HUGHES
HUGHES-SAFETY.COM
Justrite Safety Group

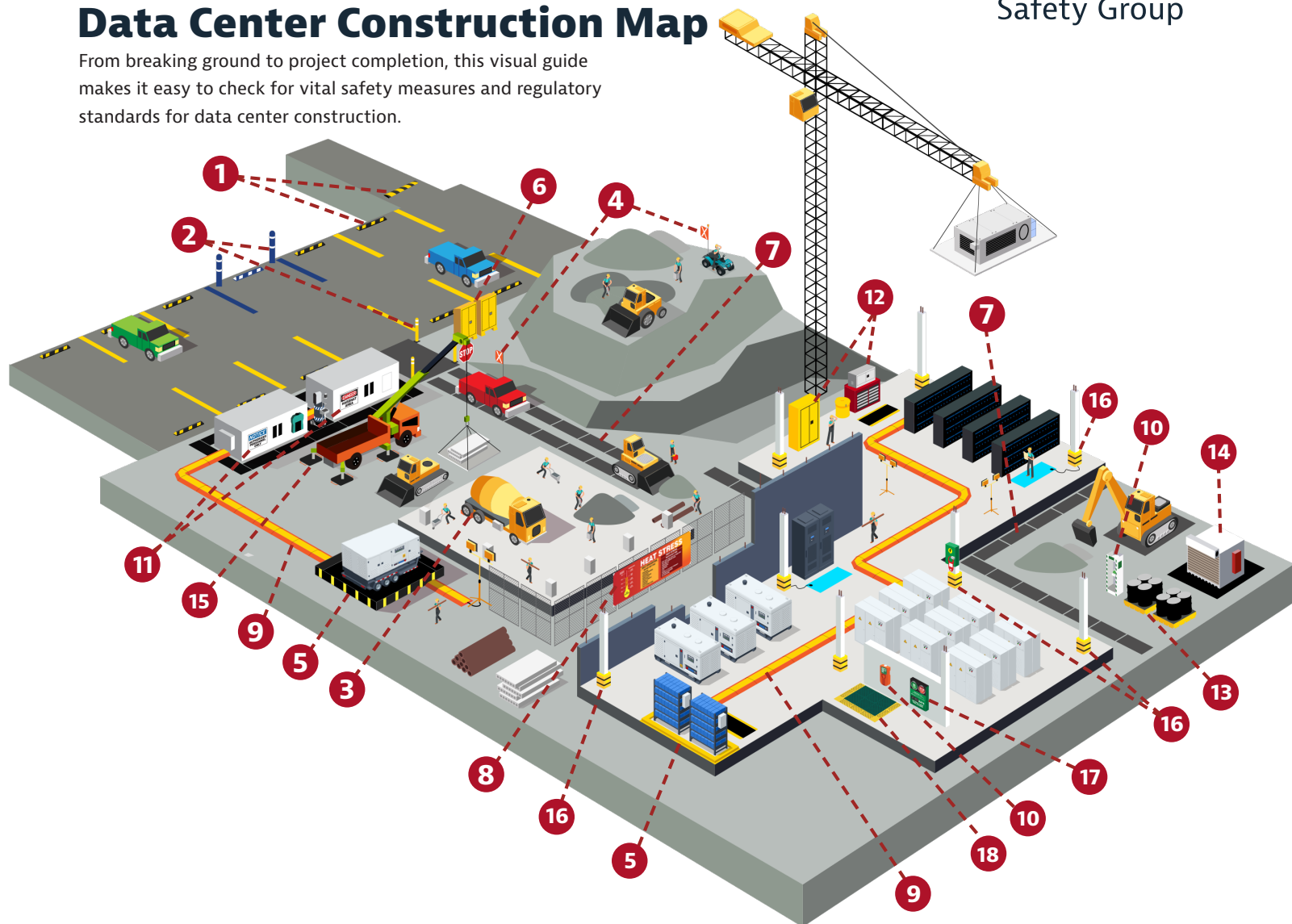
 **Justrite**

NOTRAX
Justrite Safety Group

 **U.S. CHEMICAL
storage**[®] Justrite Safety Group

Data Center Construction Map

From breaking ground to project completion, this visual guide makes it easy to check for vital safety measures and regulatory standards for data center construction.



- | | | |
|---|--|---|
| <p>1 Parking Stops and Speed Bumps
Traffic control devices enhancing safety in construction site parking areas.</p> <p>2 Bollards
Robust steel barriers protecting buildings and pedestrians from vehicle impacts in high-traffic areas.</p> <p>3 Wheel Chocks
Prevent vehicle roll-aways on inclines, enhancing site safety with durable, lightweight design.</p> <p>4 Warning Whips
Ensure high visibility and reliability for vehicles or equipment in any condition.</p> <p>5 Spill Containment Berms
Flexible barriers that contain spills, protecting the environment and ensuring regulatory compliance.</p> <p>6 Outdoor Flammable Cabinets
Weatherproof storage for hazardous materials, enhancing site safety and meeting OSHA standards.</p> | <p>7 Ground Protection Mats
Durable mats supporting heavy loads, creating stable pathways over uneven or muddy terrain.</p> <p>8 Fence Wraps
Customizable barrier fabric enhancing privacy, safety, and branding on construction site perimeters.</p> <p>9 Cable Protectors
Durable ramps shielding electrical cables from damage, supporting up to 34,000 lbs per axle of equipment.</p> <p>10 Emergency Shower & Eye Washes
Portable decontamination stations for rapid response to chemical exposures on-site.</p> <p>11 Safety Signs
High-visibility signage communicating hazards, directions, and safety information to workers.</p> <p>12 Safety Cabinets
Securely stores flammable or hazardous materials, preventing accidents.</p> | <p>13 Spill Containment Pallets
Leakproof pallets contain hazardous spills and ensure compliance.</p> <p>14 Lithium Battery Storage Buildings
Specialized buildings provide secure, fire-resistant lithium battery storage.</p> <p>15 SafetyTech® Outrigger Pads
Durable pads prevent sinking, protect surfaces, and enhance stability.</p> <p>16 Column Protectors
Impact-resistant sleeves shield columns from vehicle or equipment collisions.</p> <p>17 Digi-Day® Electronic Scoreboards
Track safe days on scoreboard sign to inform, alert, and promote safe work days.</p> <p>18 Eye Wash Mats
Bright yellow/green mats mark eye wash and safety shower locations.</p> |
|---|--|---|

FIRE SAFETY

Flammable Safety Cabinets

Durable, fire-resistant storage that protects flammable liquids in data centers—reducing risks, safeguarding uptime, and ensuring compliance in mission-critical environments.



Utili-Guard+™ Flammable Safety Cabinets

Advanced safety meets smart storage in a sleek, space-saving design—replacing two cabinets while adding 4 extra cubic feet for maximum efficiency.



Lithium-Ion Battery Charging Cabinet

Most lithium-ion battery fires happen during charging. The Justrite cabinet features a 9-layer ChargeGuard™ system, pressure relief vent, double-wall insulation, and a filtration system to help reduce risk and contain hazards



Product Description	SKU	CA Prop 65
Justrite, 4kWh TECR, 2 Doors, Manual Close, Gray	231703	⚠️

⚠️ **WARNING:** This product can expose you to chemicals including lead, which is known to the State of California to cause cancer and birth defects or other reproductive harm. For more information go to www.P65Warnings.ca.gov

Lithium Battery Storage Buildings

Lithium battery storage for new batteries, DDR batteries, or testing/assembly of batteries. Conforms to NFPA 855 and 2-hour fire rated for safety.



Product Description	SKU	CA Prop 65
U.S. Chemical Storage, 2-hour fire rated construction building, Overall Exterior dimensions 21' x 10' x 10'	FastLane FL1909	—
U.S. Chemical Storage, 2-hour fire rated construction building, Overall Exterior dimensions 11' x 10' x 10'	FastLane FL0909	—

Safety Cans and Containers

Data centers demand strict fire safety to protect infrastructure and ensure uptime. Flammable safety cans from Justrite and Eagle provide compliant storage for fuels and chemicals, reducing risks, meeting UL/ULC, OSHA, and NFPA standards, and supporting safe, reliable, mission-critical operations.

OSHA requires flammables with a flash point below 80°F (27C) be in a red can with yellow band. Typical industry convention is:



Red for Gasoline	Yellow for Diesel	Green for Oil	Blue for Kerosene
-------------------------	--------------------------	----------------------	--------------------------



Type I with Funnel



Type II with Metal Hose

Product Description	SKU	CA Prop 65
Eagle 5 gal, Type I, Steel Safety Can, Red	U150FS	⚠️
Justrite 5 gal, Type II Steel Safety Can, AccuFlow™, Red	7250130	⚠️

⚠️ **WARNING:** This product can expose you to chemicals including Lead, which is known to the State of California to cause cancer and birth defects or other reproductive harm. For more information go to www.P65Warnings.ca.gov



While regulatory codes do not mandate the specific color for a safety flammable cabinet, industry has customarily observed certain colors for defined liquids.

Yellow for flammable liquids	Green for pesticides and insecticides
Red for paints, inks, and other combustible liquids	Silver or neutral colors for laboratory settings
Blue for corrosives and hazardous liquids	White, beige or gray for waste or outdoor lockers

Flammable Safety Cabinets	SKU	CA Prop 65
Justrite 45 gal, Manual Close, Flammable Cabinet, Sure-Grip™ EX, Yellow	894500	⚠️
Justrite 45 gal Self Close Utili-Guard+™ Flammable Safety Cabinet	U894520	⚠️
Justrite 60 gal, Manual Close Doors, Outdoor Flammable Storage Cabinet	816000	⚠️

⚠️ **WARNING:** This product can expose you to chemicals including lead, which is known to the State of California to cause cancer and birth defects or other reproductive harm. For more information go to www.P65Warnings.ca.gov

SAFETY IDENTIFICATION ESSENTIALS

Safety Signs

Safety signs identify and indicate the potential type and degree of hazards that may lead to accidental injury or property damage. They comply with OSHA 29 CFR 1910.145 and ANSI Z535 standards. Safely made in the USA.



Electrical Hazards

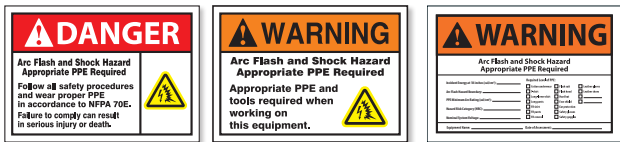
Warn of electrical dangers; OSHA, NEC, ANSI, and NFPA compliant.



AccuformNMC Safety Sign	SKU	CA Prop 65
WARNING Arc Flash And Shock Hazard, 7" x 10" Plastic	MELC359VP	—
DANGER High Voltage, 7" x 10" Plastic	MELC113VP	—
DANGER High Voltage Keep Out, 7" x 10" Plastic	MELC127VP	—

Electrical Hazard Safety Arc Flash Labels

Post labels to identify, warn workers of arc flash, shock hazard, and fault explosion from energized electrical equipment. Labels define the electrical risk, flash protection boundary, and required proper PPE to be worn for appropriate safe work practices.



AccuformNMC Safety Label	SKU	CA Prop 65
DANGER Arc Flash and Shock Hazard...5" x 7" Adhesive Dura-Poly	LELC315	—
WARNING Arc Flash and Shock Hazard...5" x 7" Adhesive Dura-Poly	LELC316	—
WARNING Arc Flash and Shock Hazard (energy & PPE)...5" x 7" Adhesive Dura-Poly	LELC334	—

Noise and Vibration

Post signs to alert of hazardous noise and vibration areas; ensure protective measures are taken.



AccuformNMC Safety Sign	SKU	CA Prop 65
CAUTION High Noise Area Wear Hearing Protection, 10" x 14" Plastic	MPPE715VP	—
CAUTION High Noise Level Area, 10" x 14" Plastic	MPPA638VP	—

Airborne Contaminants

Alert for harmful airborne particles; ensure proper protection.



AccuformNMC Safety Sign	SKU	CA Prop 65
DANGER Combustible Dust Area, 10" x 14" Plastic	MCHL292VP	—
DANGER Respirators Required Beyond This Point, 10" x 14" Plastic	MPPA035VP	—

Physical Hazards: Slips, Trips, Falls

Identify slip, trip, or fall hazards; take caution in marked areas.



AccuformNMC Safety Sign	SKU	CA Prop 65
CAUTION, Not A Step, 10" x 14" Plastic	MSTF649VP	—
CAUTION, Watch Your Step, 10" x 14" Plastic	MSTF661VP	—
CAUTION, Slippery When Wet, 10" x 14" Plastic	MSTF642VP	—

Confined Spaces

Mark restricted spaces; entry requires safety precautions to comply with OSHA 29 CFR 1910.146.



AccuformNMC Safety Sign	SKU	CA Prop 65
DANGER Confined Space Authorized Personnel Only, 10" x 14" Plastic	MCSPI41VP	—
DANGER Confined Space Enter By Permit Only, 10" x 14" Plastic	MCSPI34VP	—
DANGER Permit Required Confined Space Do Not Enter, 10" x 14" Plastic	MCSPO58VP	—

Security Risk

Warn of security threat zones; access controlled for safety.



AccuformNMC Safety Sign	SKU	CA Prop 65
DANGER Construction Area Keep Out, 10" x 14" Plastic	MADM014VP	—
DANGER Construction Site Authorized Personnel Only, 10" x 14" Plastic	MADM003VP	—
NO TRESPASSING Violators Will Be Prosecuted, 10" x 14" Plastic	MATR900VP	—

Fire Hazards

Identify fire risks or CO₂ suppression areas, alert workers to dangers in emergencies, and ensure OSHA and NFPA (12) compliance.



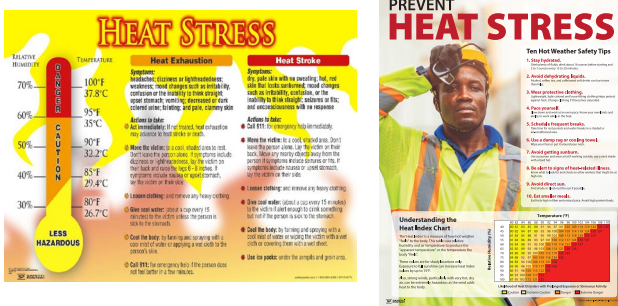
AccuformNMC Safety Sign	SKU	CA Prop 65
Fire Extinguisher, 14" x 10" Plastic	MFXXG908VP	—
Fire Alarm, 14" x 10" Plastic	MFXXG904VP	—
Fire Hose, 14" x 10" Plastic	MFXXG520VP	—

CUSTOMIZE It! Unlimited choices for branding, size, color and more! Call us today!

SAFETY IDENTIFICATION ESSENTIALS

Heat Stress Posters and Banners

Heat stress safety messages are shared through durable, wipeable posters and large, visible banners with bold graphics and reinforced materials to reinforce procedures, raise awareness, and promote safe practices in key workplace areas. Reference proposed rule OSHA 29 CFR 1910.148 for compliance with heat stress prevention standards.



Temperature Digi-Day® Boards

Alert and remind workers of dangerous heat stress temperatures. Temperature is LED digital green and red. As temperatures rise, it changes to red (user-specified setting). Get attention with awareness message, bold color graphics on aluminum with hang brackets. 110/120 VAC power with 8-ft. cord.



AccuformNMC Digi-Day® Boards

Avoid Heat Stress Temperature, 28" x 20" Aluminum w/ LED Indicator
Beat The Heat Temperature, 28" x 20" Aluminum w/LED Indicator

SKU CA Prop 65

SCK701 ⚠

SCK702 ⚠

⚠ WARNING: Cancer and Reproductive Harm - www.P65Warnings.ca.gov

PPE-ID Charts

OSHA requires employers to provide and enforce PPE use when other controls are insufficient; clear identification ensures compliance.



AccuformNMC PPE-ID Charts

PPE-ID™ Chart & Label Booklet Kit, 24" x 18" Plastic 24" x 18" Plastic
Changeable PPE-ID™ Chart, 24" x 18" Plastic

SKU CA Prop 65

PPE468 —

PPE236 ⚠

⚠ WARNING: Cancer and Reproductive Harm - www.P65Warnings.ca.gov

AccuformNMC Posters

Heat Exhaustion and Heat Stroke Heat Stress Poster, 17" x 22" Laminate Plastic

SKU CA Prop 65

SP124477L ⚠

Prevent, Hot Weather Tips, Heat Index Heat Stress Poster, 22" x 17" Laminate Plastic

SKU CA Prop 65

SP125388L ⚠

⚠ WARNING: Cancer and Reproductive Harm - www.P65Warnings.ca.gov

AccuformNMC Banners

AccuformNMC Heat Exhaustion and Heat Stroke Heat Stress Banner, 28" x 8-ft Poly Sheet

SKU CA Prop 65

MBR579 ⚠

AccuformNMC Water Rest Shade Heat Stress Banner, 28" x 8-ft Poly Sheet

SKU CA Prop 65

MBR582 ⚠

⚠ WARNING: Cancer and Reproductive Harm - www.P65Warnings.ca.gov

Digi-Day® Electronic Scoreboards

Track days on Scoreboard Sign to promote safe work days. LED day counter updates automatically - in green for safe, or, if accident, in red, to meet goal. Remote control operable. Four 2 1/2" H LED digits in aluminum sign with safety message. Operates on 110/120 VAC.



AccuformNMC Digi-Day® Scoreboard

Green Days Mean No Recordable Accidents 28" x 20", Aluminum w/LED Indicator

SKU CA Prop 65

SCK102 ⚠

We Have Worked ... 28" x 20", Aluminum w/LED Indicator

SKU CA Prop 65

SCK104 ⚠

Go Home Safe Today! ... 28" x 20", Aluminum w/LED Indicator

SKU CA Prop 65

SCK106 ⚠

⚠ WARNING: Cancer and Reproductive Harm - www.P65Warnings.ca.gov

Tags By-The-Roll

Portable cardboard dispenser for your on-the-go needs. The eye-catching octagon design sits on flat surfaces or mounts via a center spindle hole for easy access.

- Tear and water-resistant, PF cardstock
- Tags are 6 1/4" x 3" with 3/8" top hole
- Available in rolls of 100 or 250
- Ideal for indoor or short-term outdoor use



AccuformNMC Tags By-The-Roll

DANGER BARRICADE TAG, PF-Cardstock
DANGER BARRICADE TAG, PF-Cardstock
CAUTION BARRICADE TAG, PF-Cardstock
CAUTION BARRICADE TAG, PF-Cardstock
DANGER DO NOT ENTER, PF-Cardstock
DANGER DO NOT ENTER, PF-Cardstock

QTY

SKU

CA Prop 65

100/RL

TAR128

—

250/RL

TAR159

—

100/RL

TAR136

—

250/RL

TAR160

—

100/RL

TAR104

—

250/RL

TAR140

—

Safety Tags

Prevent accidents and protect equipment—AccuformNMC safety tags deliver tear, chemical, and UV resistance, secure mounting, and OSHA/ANSI compliance for clear, durable hazard communication.



Size: 5 3/4" x 3 1/4"

AccuformNMC Safety Tags

Lockout Tag, DANGER LOCKED OUT DO NOT OPERATE, PF-Cardstock	QTY	SKU	CA Prop 65
Lockout Tag, DANGER LOCKED OUT DO NOT OPERATE, RP-Plastic*	25/PK	MLT407CTP	—
Barricade Tag, CAUTION BARRICADE TAG REASON INSTALLED, PF-Cardstock	25/PK	MLT407PTP	⚠
Barricade Tag, CAUTION BARRICADE TAG REASON INSTALLED, RP-Plastic*	25/PK	TAB105CTP	—
Inspection Tag, EMERGENCY SHOWER & EYE WASH TEST RECORD, PF-Cardstock	25/PK	TAB105PTP	⚠
Inspection Tag, EMERGENCY SHOWER & EYE WASH TEST RECORD, RP-Plastic*	25/PK	MGT207CTP	—
Inspection Tag, INSPECTION RECORD, PF-Cardstock	25/PK	MGT207PTP	⚠
Inspection Tag, INSPECTION RECORD, RP-Plastic*	25/PK	TRS307CTP	—
Scaffold Tag, DANGER DO NOT USE THIS SCAFFOLD KEEP OFF, PF-Cardstock	25/PK	TRS307PTP	⚠
Scaffold Tag, DANGER DO NOT USE THIS SCAFFOLD KEEP OFF, RP-Plastic*	25/PK	TSS101CTP	—
Safety Tag, DANGER DO NOT OPERATE, PF-Cardstock	25/PK	TSS101PTP	⚠
Safety Tag, DANGER DO NOT OPERATE, RP-Plastic*	25/PK	MDT189CTP	—
Safety Tag, DANGER DO NOT OPERATE, RP-Plastic*	25/PK	MDT189PTP	⚠

*metal grommet hole

⚠WARNING: Cancer and Reproductive Harm – www.P65Warnings.ca.gov

Hard Hat Labels & Stickers

Hard Hat Labels add visibility and safety message on workers' hard hats. Convey the commitment to safety. Adhesive-Poly is flexible to conform to the curve of a hard hat. Waterproof labels have a self-adhesive back with peel-off liner. Labels can also be applied to machinery, tool boxes, and other safety equipment.



AccuformNMC Hard Hat Labels	QTY	SKU	CA Prop 65
CERTIFIED FIRST AID, 2 1/4", Adhesive-Poly	10/PK	LHT1109	—
CPR FIRST AID CERTIFIED AND TRAINED, 2 1/4", Adhesive-Poly	10/PK	LHT1348	—
LOCK-OUT TAG-OUT TRAINED, 2 1/4", Adhesive-Poly	10/PK	LHT1344	—
AUTHORIZED FORKLIFT DRIVER, 2 1/4", Adhesive-Poly	10/PK	LHT1332	—
CERTIFIED FORKLIFT DRIVER, 2 1/4", Adhesive-Poly	10/PK	LHT1334	—
EMERGENCY MEDICAL INFORMATION, 1 1/2" X 6", Adhesive-Poly	5/PK	LHT1250	—

SECONDARY SPILL CONTAINMENT

Spill containment is vital in data center construction to protect equipment during installation, ensure compliance, and safeguard workers and the environment. It prevents leaks, avoids costly delays, and keeps projects on schedule while showing environmental responsibility.

Rigid-Lock QuickBerm®

On data center construction sites, rapid setup and reliable containment are vital for backup transformers, fuel tanks, and other fuel-handling equipment. The Rigid-Lock QuickBerm® deploys in minutes with strong, self-supporting walls to ensure EPA and SPCC compliance.



Product Description	SKU	CA Prop 65
Justrite 10' x 10' x 12", 745 gal, Drive Over Berm	28519	⚠
Justrite 6' x 8' x 12", 355 gal, Drive Over Berm	28516	⚠
Justrite 4' x 8' x 12", 235 gal, Drive Over Berm	28514	⚠

⚠WARNING: This product can expose you to chemicals including lead, which is known to the State of California to cause cancer and birth defects or other reproductive harm, and nickel, which is known to the state of California to cause cancer. For more information go to www.P65Warnings.ca.gov.

Rigid-Lock QuickBerm® Lite

Ideal for lightweight or infrequent spill risk zones, such as temporary equipment staging areas and service yards. Provides rapid, cost-effective protection for emergency spills where heavy loads or vehicle access are not required.



Product Description	SKU	CA Prop 65
Justrite 4' x 6' x 8", 119 gal, Folding Berm	28372	⚠
Justrite 8' x 8' x 8", 318 gal, Folding Berm	28376	⚠

⚠WARNING: This product can expose you to chemicals including diisonyl phthalate and lead, which are known to the State of California to cause cancer and birth defects or other reproductive harm. For more information go to www.P65Warnings.ca.gov.

Angle Bracket QuickBerm®

For long-term equipment or fuel storage without drive-in access, the Angle Bracket QuickBerm® offers economical, reliable containment with sturdy angle-bracket support that maximizes space for static setups.



Product Description	SKU	CA Prop 65
Justrite 8X8X12 Angle Bracket QuickBerm®	28070	⚠
Justrite 10X10X12 Angle Bracket QuickBerm®	28071	⚠

⚠WARNING: This product can expose you to chemicals including lead, which is known to the State of California to cause cancer and birth defects or other reproductive harm, and nickel, which is known to the state of California to cause cancer. For more information go to www.P65Warnings.ca.gov.

SECONDARY SPILL CONTAINMENT

Make-A-Berm™ Kit

Cooling and HVAC systems are vital for safe operations, but leaks from chillers or drains can spread and damage sensitive equipment. The customizable Make-A-Berm™ seals containment around fixed assets—without permanent floor alterations.



Product Description	SKU	CA Prop 65
Justrite Make-A-Berm 1.5'x50' Kit	28464	—

HFF Berm Drain Kit

Outdoor containment berms often collect rainwater, leading to overflow and compliance issues. The HFF Berm Drain Kit filters stormwater, blocks hydrocarbons, and enables safe drainage around rooftop or generator equipment.



Product Description	SKU	CA Prop 65
Justrite HFF Berm Drain Kit	26485	—

WARNING: This product can expose you to chemicals including lead, which is known to the State of California to cause cancer and birth defects or other reproductive harm, and nickel, which is known to the state of California to cause cancer. For more information go to www.P65Warnings.ca.gov.

Drums

Eagle HDPE drums keep fuels and coolants safely contained anywhere onsite during data center construction. Durable and chemical-resistant, they prevent leaks and protect critical infrastructure to help projects stay on track and compliant.



Product Description	SKU	CA Prop 65
Eagle 55 Gallon, Metal Lever-Lock, Plastic Barrel Drum, Blue	1656MB	—
Eagle 55 Gallon, Plastic Lever-Lock, Plastic Barrel Drum, Black	1655BLK	—

The EPA can impose fines up to
\$25,000 PER DAY
 and 1-year of imprisonment for negligent discharge of pollutants into U.S. waters under the Clean Water Act.



Spill Prevention Control and Countermeasures (SPCC) regulations mandate secondary containment for containers over 55 gallons at sites with above-ground oil storage exceeding

1,320 GALLONS

Spill containment solutions improve safety programs by limiting exposure to hazardous materials and keeping personnel safe from spills and falls, which average

\$49,971 PER INCIDENT

Spill Containment Pallets

Rugged HDPE Eagle spill pallets safely store fuels, coolants, adhesives, and other hazardous materials on data center construction sites. They protect workers and equipment while ensuring full regulatory compliance.



Product Description	SKU	CA Prop 65
Eagle 1 Drum, 15 gal, Modular Spill Pallet without Drain	1633	—
Eagle 2 Drum, 30 gal, Modular Spill Platform without Drain	1632	—
Eagle 4 Drum, 60.5 gal, Modular Spill Platform without Drain	1635	—
Eagle 4 Drum, 60.5 gal, Modular Spill Platform with Drain	1635d	—
Eagle Spill Pallet Ramp	1689	—
Eagle 400 gal, IBC Containment Unit with Drain	1683d	—

FACILITY PROTECTION

Column Protectors

Safeguard structural columns in data centers from equipment impact, preventing costly damage and downtime. Durable and highly visible, these install easily without tools, enhancing safety and protecting mission-critical infrastructure where uptime matters.



Product Description	SKU	CA Prop 65
Eagle Square Column, Fits 10", Column Protector, Yellow	1710	—
Eagle Square Columns, Fits 12", Column Protector, Yellow	1712	—

FACILITY PROTECTION

Bollard Posts

Provide strong, visible protection for data center equipment and infrastructure. Made from durable materials, they guard against collisions, reduce damage, and help maintain uptime in mission-critical environments.

Product Description	SKU	CA Prop 65
Eagle 6" x 42", 1/4" Steel, Round, Bollard Post, Yellow	1764	—
Eagle 4" x 42", 1/4" Steel, Round, Bollard Post, Yellow	1744	—



GROUND PROTECTION MATS

Ground protection mats create stable roadways and platforms, prevent equipment from getting stuck, and reduce ground damage and erosion during data center construction.



Product Description	SKU	CA Prop 65
Checkers AlturnaMAT® 4' x 8' Mat	AM48	⚠
Checkers VersaMAT® 4' x 8' Mat	VM48	⚠

⚠ **WARNING:** This product can expose you to chemicals including Carbon Black, which is known to the State of California to cause cancer and birth defects or other reproductive harm. For more information go to www.P65Warnings.ca.gov.

KneeRX™ Kneeling Mats

These mats provide durable, oil resistant comfort for tough kneeling tasks on gravel, asphalt, or concrete. Built-in handle for easy transport.



Product Description	SKU	CA Prop 65
NoTrax Knee RX™ Kneeling Pad, 12" x 22"	950S1222BL	⚠
NoTrax Knee RX™ Heavy Duty Kneeling Pad, 12" x 22"	951S1222BL	⚠

⚠ **WARNING:** This product can expose you to chemicals including di-2-ethylhexyl phthalate and/or diisononyl phthalate which is known to the State of California to cause cancer, birth defects or reproductive harm. For more information, visit www.P65Warnings.ca.gov.

SafetyTech® Outrigger Pad

Durable outrigger pads enhance stability, prevent sinking, and protect wood, concrete, or asphalt surfaces on soft ground.



Product Description	SKU	CA Prop 65
Checkers SafetyTech® Outrigger Pad 18" x 18", 27.5 Ton Load Capacity	PAD18181	—
Checkers SafetyTech® Outrigger Pad 24" x 24", 2" Thick, 31 Ton Capacity	PAD24242	—

MATTING SOLUTIONS

Designed for demanding environments, matting solutions protect workers by enhancing safety, comfort, and surface stability.

Switchboard Matting

Switchboard matting insulates against electrical shock, helps meet safety standards, and enhances safety around high-voltage areas.



Product Description	SKU	CA Prop 65
NoTrax Corrugated Switchboard Matting Type 2 PVC compound, Class 2 Di-electric Strength: 30,000 volts Voltage max use recommended: 17,000	830	⚠
NoTrax Diamond Switchboard Matting Type 2 PVC compound, Class 2 Di-electric Strength: 30,000 volts Voltage max use recommended: 17,000	831	⚠

⚠ **WARNING:** This product can expose you to chemicals including di-2-ethylhexyl phthalate and/or diisononyl phthalate which is known to the State of California to cause cancer, birth defects or reproductive harm. For more information, visit www.P65Warnings.ca.gov.

ALTURNAMATS
CAN PROVIDE A
91% ROI
IN JUST
1 YEAR

ALTURNAMATS
CAN PROVIDE A
100% ROI
IN JUST
15 MONTHS

ROI by Using AlturnaMAT
Approximate cost of replacing
12 sheets of plywood 4 times per year.

YEAR	ROI
01	\$2,400
02	\$4,800
05	\$12,000
15	\$36,000

MATTING SOLUTIONS

Anti-Fatigue and Entrance Matting

Anti-Fatigue Mats reduce strain from prolonged standing, while Entrance Mats help prevent dirt and moisture from entering buildings.



Product Description	SKU	CA Prop 65
NoTrax 479 Cushion Trax® Mat	479	▲
NoTrax 109 Brush Step Mat	109	—
NoTrax Scraper Outdoor Brush Mat, Rubber Brush™	345	—

▲ **WARNING:** This product can expose you to chemicals including di-2-ethylhexyl phthalate and/or diisononyl phthalate which is known to the State of California to cause cancer, birth defects or reproductive harm. For more information, visit www.P65Warnings.ca.gov.

ESD Mats & Anti Static Mats

ESD matting is ideal when flooring is installed and sensitive electronics are present, providing safe static dissipation and supporting regulatory compliance during critical equipment fit-out phases.



Product Description	SKU	CA Prop 65
NoTrax 826 DIAMOND STAT 3'X5' BLACK	826S0035BL	▲
NoTrax 825 CUSHION STAT 3'X5' BLACK/YELLOW	825S0035BY	—
NoTrax 558 CUSHION-EASE® ESD SOLID 3'X3' BLACK	558S0033BL	▲*
NoTrax 827 ANTI-STAT POP 30"X40" BLUE	827R3040BU	—
NoTrax 555 SUPERFLOW XT ESD 3'X5' BLACK	555S0035BL	—
NoTrax 457 SKYSTEP ESD 3'X5' BLACK	457S0035BL	—
NoTrax 573 DE-FLEX® ESD 18"X18" BLACK	573S1818BL	—

▲ **WARNING:** This product can expose you to chemicals including di-2-ethylhexyl phthalate and/or diisononyl phthalate which is known to the State of California to cause cancer, birth defects or reproductive harm. For more information, visit www.P65Warnings.ca.gov.

▲* **WARNING:** This product can expose you to chemicals including diisodecyl phthalate which is known to the State of California to cause birth defects or reproductive harm, and 2-mercaptobenzothiazole which is known to the State of California to cause cancer. For more information, visit www.P65Warnings.ca.gov.

Mud, Debris & Snow Ice Boot Scraper™

Featuring flexible rubber fingers, this boot scraper effectively removes dirt, mud, and snow from shoes and boots.

Product Description	SKU	CA Prop 65
NoTrax Mud, Debris & Snow Boot Scraper	352S1215BL	—



VEHICLE & MOTION SAFETY

Parking Stops, Traffic Bumps and Humps

Designed to slow traffic, manage flow, and improve safety in work zones.

- Save install time with sustainable, long-lasting solutions
- Available in black, blue, and green (EV)
- Enhance site appearance
- Backed by a 3-year best-in-class warranty



Product Description	SKU	CA Prop 65
Checkers Parking Curb 6", Black/Yellow	GNRS1610YB	▲
Checkers ADA Parking Curb 6", Blue/White	GNRS1320WB	▲
Checkers Alley Speed Bump 6", Black/Yellow	GNRS2631YB	▲
Checkers Easy Rider Speed Bump 6"	GNRS2611YB	▲
Checkers Safety Rider® Speed Hump	GNRS3500YB	▲

▲ **WARNING:** This product can expose you to chemicals including Arsenic, Cobalt, Cadmium, Lead, Chromium, Nickel Compounds, which is known to the State of California to cause cancer and birth defects or other reproductive harm. For more information go to www.P65Warnings.ca.gov.

Warning Whips

Warning whips provide high-visibility identification for vehicles and equipment on industrial sites, available in 3–12 ft sizes and ranging from economical to deluxe fully lit models—offering solutions for every application, from basic alerts to high-visibility needs.

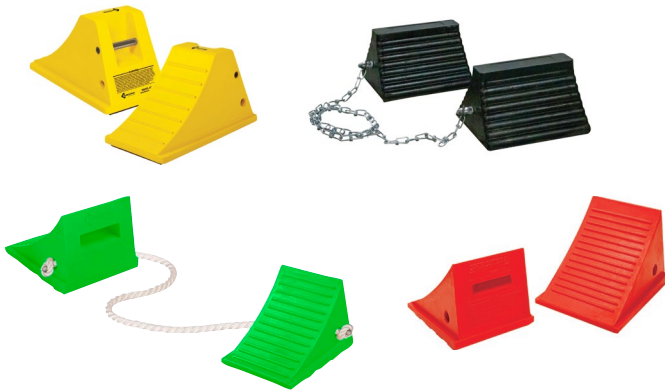
Product Description	SKU	CA Prop 65
Checkers Quick Disconnect Whip 6'	FS6X-O	—
Checkers Lighted Whip 8' Orange	FS8XL-O	▲
Checkers Lighted Whip 6' Green	FS6XL-G	▲

▲ **WARNING:** This product can expose you to chemicals including Nickel Compounds, which is known to the State of California to cause cancer and birth defects or other reproductive harm. For more information go to www.P65Warnings.ca.gov.



Wheel Chocks

Wheel chocks are vital for construction safety, preventing accidental vehicle movement. Checkers wheel chocks feature tough, lightweight polyurethane for durability, chemical resistance, and high visibility. Select models handle loads of several hundred tons.



Product Description	SKU	CA Prop 65
Checkers All-Terrain Chock w/ Rubber Pad	AT3512-RP-Y	▲*
Checkers Rubber Chocks Chained Pair	RC815-CP	▲**
Checkers Hi-Viz Green Chocks Pair	UC1700-FLG-P	▲†
Checkers Hi-Viz Green Chock Single	UC1500-4.5-FLG	▲†

▲** **WARNING:** This product can expose you to chemicals including Lead and Lead (compounds and Di(2-Ethylhexyl) Phthalate (DEHP), which are known to the State of California to cause cancer and birth defects or other reproductive harm. For more information go to www.P65Warnings.ca.gov.

▲ **WARNING:** This product can expose you to chemicals including Carbon Black, which is known to the State of California to cause cancer and birth defects or other reproductive harm. For more information go to www.P65Warnings.ca.gov.

▲† **WARNING:** This product can expose you to chemicals including Acrylonitrile and Styrene, which is known to the State of California to cause cancer and birth defects or other reproductive harm. For more information go to www.P65Warnings.ca.gov.

NOISE PROTECTION

Justrite QuietSite™ Noise Reduction Barriers

Justrite QuietSite™ Barriers reduce construction noise in data center projects, protecting sensitive equipment and aiding compliance. They install easily on fences, scaffolds, or frames, improving productivity and supporting noise regulations.

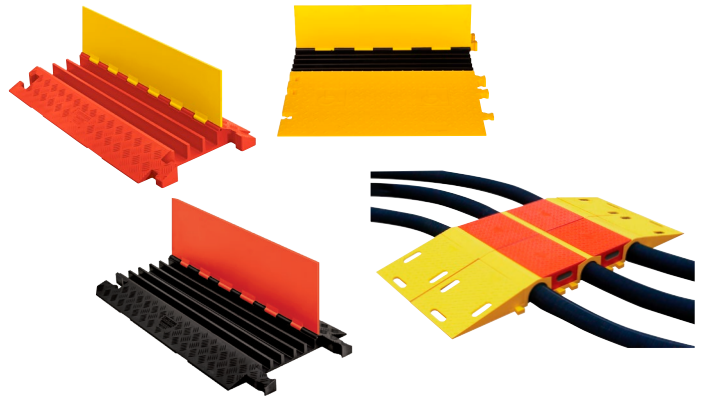


Product Description	SKU	CA Prop 65
Justrite Sound Barrier Panel 4' x 8'	26466	▲
Justrite Sound Barrier Kit includes a 4'x8' premium panel, a metal frame kit, and a base.	26466KT	▲

▲ **WARNING:** This product can expose you to chemicals including diisononyl phthalate, which is known to the State of California to cause cancer and birth defects or other reproductive harm. For more information go to www.P65Warnings.ca.gov.

CABLE AND HOSE PROTECTION

Durable cable and hose protectors safeguard lines and create safe crossings for pedestrians, vehicles, and equipment—enhancing jobsite safety and efficiency.



Product Description	SKU	CA Prop 65
Checkers 3-Channel Linebacker® Cable Protector for 2.25" Lines	CP3X225-Y/O	▲
Checkers 5-Channel Yellow Jacket® Cable Protector for 1" Lines	YJ5-125-Y/B	▲
Checkers 5-Channel Guard Dog® Cable Protectors for 1.325" Lines	GDSX125-O/B	▲*
Checkers 6.5" Diamondback® Single Tunnel System	UHB5060	▲
Checkers 5-Channel Yellow Jacket® Heavy-Duty Cable Protector	YJ5x125-AMSCTRYB	▲
Checkers 5-Channel Yellow Jacket® Heavy-Duty Cable Protector	YJ5125-AMS-F-B	▲
Checkers 5-Channel Yellow Jacket® Heavy-Duty Cable Protector	YJ5125-AMS-M-B	▲
Checkers 5-Channel Yellow Jacket® AMS® Modular Accessibility System, ADA Cable Protector	WSA-125-RFAH-Y	▲
Checkers 5-Channel Yellow Jacket® AMS® Modular Accessibility System, ADA Cable Protector	WSA-125-RMAH-Y	▲
Checkers 5-Channel Yellow Jacket® AMS® Modular Accessibility Ramp System, ADA Cable Protector for 1" Lines	WSA-125-KIT3-HS	▲

▲ **WARNING:** This product can expose you to chemicals including Carbon Black, Titanium Dioxide, Formaldehyde, and Benzyl Butyl Phthalate, which are known to the State of California to cause cancer and birth defects or other reproductive harm. For more information go to www.P65Warnings.ca.gov.

▲* **WARNING:** This product can expose you to chemicals including Lead, Carbon Black, Chromium, Nickel Compounds, and Sulfur Dioxide, which are known to the State of California to cause cancer and birth defects or other reproductive harm. For more information go to www.P65Warnings.ca.gov.

Quick Hook Overhead Hanging Cable

The Quick Cable Hook keeps cables organized and safe with its bright orange design, preventing trips and helping meet OSHA cord regulations.



Product Description	SKU	CA Prop 65
Checkers Quick Hook Overhead Hanging Cable	CHQUICKHOOK-O	▲

▲ **WARNING:** This product can expose you to chemicals including Isopropylidenediphenol and Methylene Chloride, which are known to the State of California to cause cancer and birth defects or other reproductive harm. For more information go to www.P65Warnings.ca.gov.

EMERGENCY SAFETY SHOWERS AND EYEWASHES

Safety showers in data centers protect workers from hazardous chemicals, including refrigerants and battery substances, and must be installed within 20 meters or 10 seconds of hazards, in compliance with ANSI/ISEA Z358.1-2014 and EN15154 standards.

Portable Emergency Eyewashes

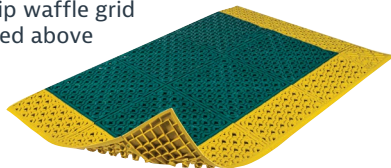
Deliver fast, reliable emergency response to protect personnel and minimize risks in critical environments. ANSI/OSHA compliant and built for durability, they provide immediate decontamination, supporting safety, compliance, and uptime in sensitive data center operations.



Product Description	SKU	CA Prop 65
Justrite 10 Gal, Portable Self-Contained Hughes Eye Wash Station	10GFEW	⚠️
⚠️ WARNING: This product can expose you to chemicals including lead, which is known to the State of California to cause cancer and birth defects or other reproductive harm. For more information go to www.P65Warnings.ca.gov		

Eyewash Station Drainage Mat

The Eyewash Station Mat features high visibility and an anti-slip waffle grid that keeps users elevated above spills and ensures fast drainage—ideal for emergency stations.



Product Description	SKU	CA Prop 65
NoTrax Eyewash Station Drainage Mat	524S3048GN	⚠️
⚠️ WARNING: This product can expose you to chemicals including di-2-ethylhexyl phthalate and/or disononyl phthalate which is known to the State of California to cause cancer, birth defects or reproductive harm. For more information, visit www.P65Warnings.ca.gov		

Mobile Emergency Shower Stations

Provides access to decontamination in areas where a fixed water supply is unavailable. Its 30-gallon tank provides 1.5 minutes of continuous flushing, while a durable frame and pneumatic tires offer easy mobility across data center warehouses and maintenance areas.



Product Description	SKU	CA Prop 65
Hughes mobile self-contained safety shower - 30 US gallon	40K45G	⚠️
⚠️ WARNING: This product can expose you to chemicals including lead, which is known to the State of California to cause cancer and birth defects or other reproductive harm. For more information go to www.P65Warnings.ca.gov		

Temperature Controlled Safety Shower

With a 300-litre heated tank and thermostatically controlled mixing valve, this temperature controlled model supplies ANSI compliant tepid water for at least 15 minutes. Ideal for chemical decontamination in plant rooms using cooling equipment.



Product Description	SKU	CA Prop 65
Hughes safety shower and ASA closed bowl eye wash with integral water heater.	TC100K545G	⚠️
⚠️ WARNING: This product can expose you to chemicals including lead, which is known to the State of California to cause cancer and birth defects or other reproductive harm. For more information go to www.P65Warnings.ca.gov		

Cubicle Safety Shower

This cubicle safety shower creates a contained decontamination zone, protecting surrounding areas from contaminated runoff. With a drain sump, lidded ABS eye/face wash, and ANSI compliant 20 GPM flow rate, it ensures rapid, controlled response in splash sensitive spaces.

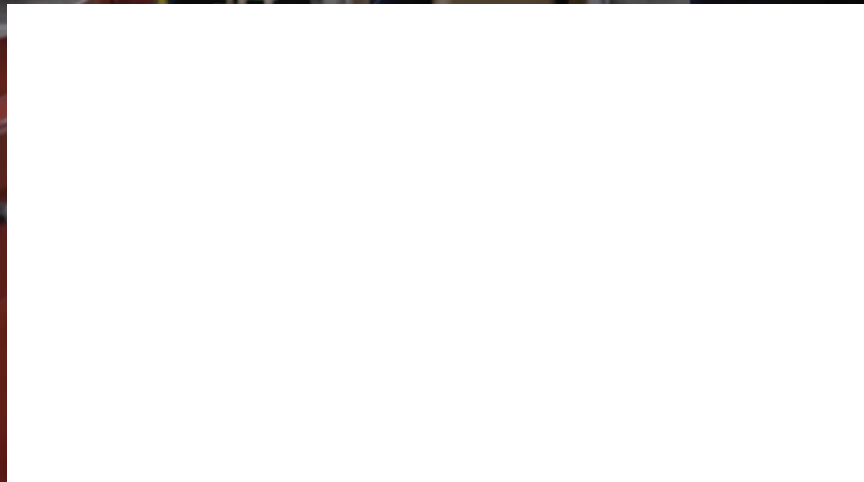


Product Description	SKU	CA Prop 65
Hughes cubicle safety shower with ASA closed bowl eye wash	SD32K45G	⚠️
⚠️ WARNING: This product can expose you to chemicals including lead, which is known to the State of California to cause cancer and birth defects or other reproductive harm. For more information go to www.P65Warnings.ca.gov		



Global Leader in Industrial Safety

Proudly Offered By:



Justrite Safety Group is a leading global manufacturer and supplier of a deep portfolio of complementary mission-critical safety products which simplify workplace safety and regulatory compliance to protect lives, assets, and the environment.



Temporary, off-site and transportation-based worksites pose unique safety and compliance challenges. We continually expand our range of portable, durable, and self-contained products to address these challenges and uphold safety compliance standards. Our jobsite products deliver unique solutions for temporary worksites, weather exposure, and extreme environments.