

373 Master Guard™ Logo Mats

Customize with your brand or message

- Heavy-duty mat designed for high traffic entrances
- Berber design carpet surface with logo inlay to promote your brand or message
- All-weather indoor/outdoor mat with a non-skid backing
- 54 ounces of needle punch yarn per square yard stops dirt, debris and moisture at the door
- Durable and long-lasting 100% solution dyed UV stabilized polypropylene fibers
- High profile vinyl edging reduces trip hazards and keep mat flat and in position



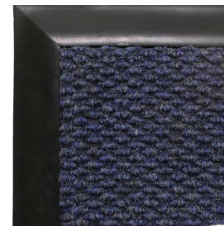
Specifications

Cut Sizes	Up to 13 ft wide and 75 ft long
Thickness	1/2"

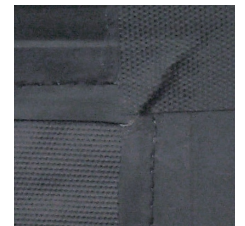
Performance:	Good	Better	Best	Superior
Water Retention	[Yellow bar]			
Crush Resistance	[Yellow bar]			
Scraping Performance	[Yellow bar]			
Function & Appearance	[Yellow bar]			



Custom designs are produced using an inlay process.

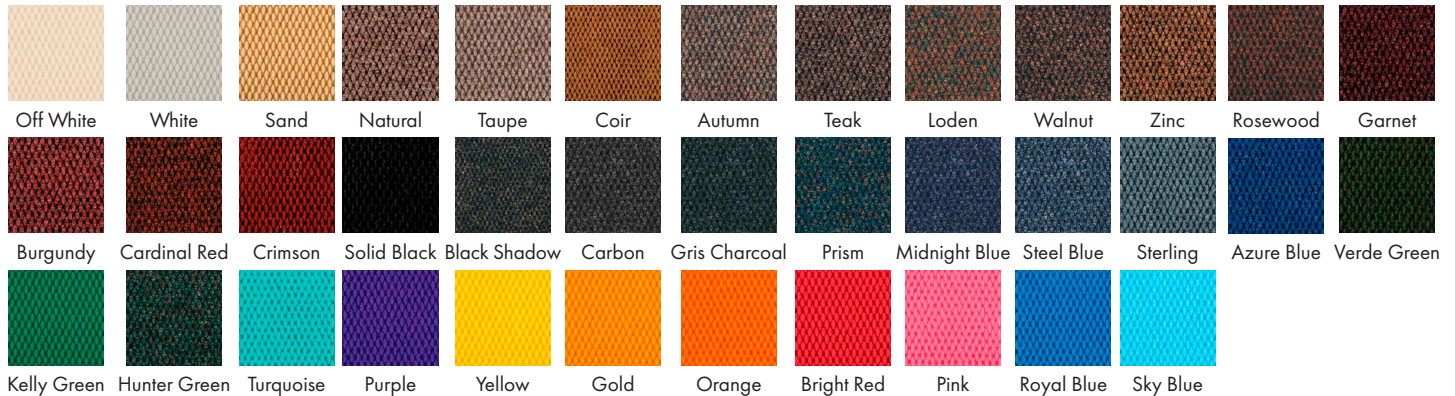


The design is affixed with an all-weather, non-skid backing.



The back edging is glued and secured with a heavy-duty lock stitch.

Colors:



To Order or Receive a Quote:

1. Select:
 - Size: available up to 13 ft wide and 75 ft long
 - Orientation: landscape or portrait (direction of artwork)
 - Background color: choose from available colors
2. Submit artwork and selections to customerservice@notrax.com
3. An artwork proof will be sent for approval; signed proof is required to place order.

File Requirements

We require RGB, high resolution images. Vector graphic files are preferred, but raster images are also acceptable if at least 300 dpi.

Acceptable vector file formats:

- EPS
- AI (Adobe Illustrator)
- PDF

Acceptable raster files:

- JPEG/JPG
- BMP (bitmap image)
- TIFF/TIF

To avoid losing details, all fonts must be converted to outlines.

For artwork that does not meet requirements, we also offer graphic design services for an additional fee. Although we cannot guarantee an exact match for PMS or Pantone® colors, many digitally mixed colors are available.

Available through

