

Ergonomic Flooring & Matting Solutions

Relieve standing workers—ergonomic solutions reduce leg and back strain



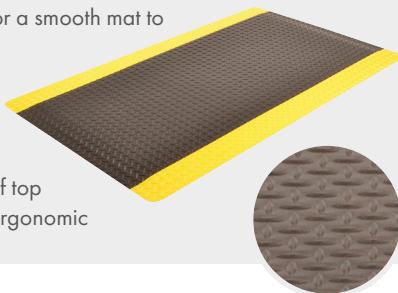
Matting

DRY AREA

985 Ergo Trax® Grande™ 1" ⚠*

485 Ergo Trax® 9/16" ⚠*

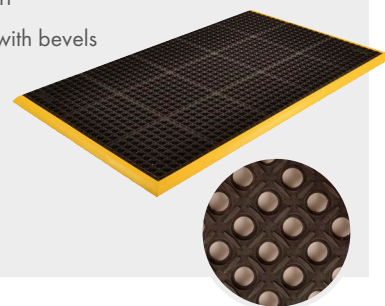
- Laminated ergonomic mat made for comfort, durability, and longevity
- Made in two thicknesses
- High-visibility yellow edges say pay attention
- Beveled on all four sides for a smooth mat to floor transition
- 100% recycled PVC diamond plate top surface for sure footing
- Unifusion™ lifetime bond of top surface to the closed-cell ergonomic nitrile rubber sponge



WET AREA

549 Safety Stance® 7/8" ⚠*

- Industrial grade rubber drainage mat with excellent non-slip and ergonomic properties
- Large hole drainage system with a mini-diamond studded top surface to minimize slippage
- Softer rubber compound for added grip, slip resistance, and comfort
- Stock sizes available with bevels on 3 or 4 sides



Matting/Floor Tiles

DRY AREA

621 Diamond Flex-Lok™ Solid 1" ⚠*

- Modular interlocking 12" x 12" tiles with solid surface and diamond tread for sure footing in wet conditions
- Multi-tiered design elevates the mat off the floor, creating air pockets and flex points for comfort
- Post and hole interlocking system for easy reconfigurations
- PVC for chemical resistance
- Available beveled ramps and corners



WET AREA

620 Diamond Flex-Lok™ 1" ⚠*

- Modular interlocking 12" x 12" tiles with drainage holes and diamond tread for sure footing in wet conditions
- Multi-tiered design elevates the mat off the floor, creating air pockets and flex points for comfort
- Post and hole interlocking system for easy reconfigurations
- PVC for chemical resistance
- Available beveled ramps and corners



* ⚠ WARNING: This product can expose you to chemicals including di-2-ethylhexyl phthalate and/or diisononyl phthalate which is known to the State of California to cause cancer, birth defects or reproductive harm. For more information, visit www.P65Warnings.ca.gov

Matting / Floor Tiles

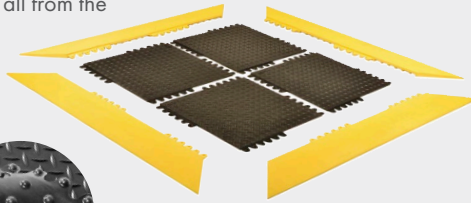
DRY
AREA

572 De-Flex® 3/4" Nitrile

570 De-Flex® 3/4"

WET
AREA

- Heavy-duty rubber modular 18" x 18" tiles
- Bulleted domes on the underside bend and flex for relief and comfort, providing support throughout 8- to 10-hour shifts
- Diamond plate surface provides traction even when pivoting
- Versatile beveled ramp – create inner corners, outer corners, or linear runs all from the same piece



WET
AREA

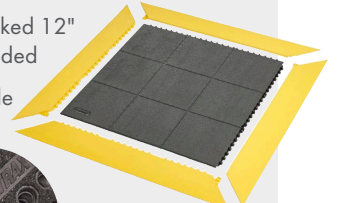
850 NIRU® Cushion-Ease® GSII™ 3/4" ⚠ **

650 NIRU® Cushion-Ease® 3/4" ⚠ ***

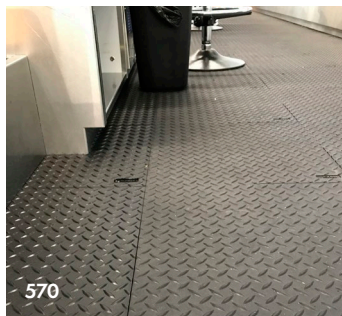
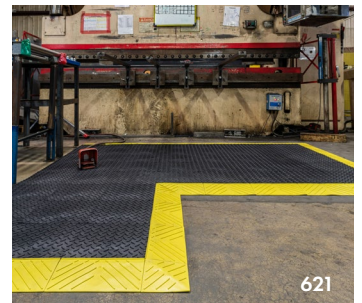
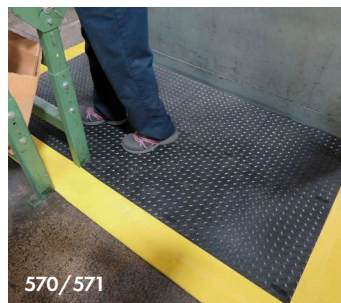
OILY
AREA

550 Cushion-Ease® 3/4" ⚠ ***

- Modular 36" x 36" heavy-duty tiles easily snap together
- Multi-nib support design offers exceptional fatigue relief
- Available in heavy-duty rubber (550), 100% nitrile (650), or 100% nitrile with GSII grit surface (850)
- Tiles and ramps can be cut at marked 12" increments—no tape measure needed
- Optional 2" wide (551) or 6" wide (552) ramps available



Ergonomic, Safe and Durable.
Let us help you find the right matting solution for you!



Get a sample and see it with your own eyes!

12" x 12" samples let you see and feel the mat, to help you find the right solution.



**⚠ WARNING: This product can expose you to chemicals including diisodecyl phthalate which is known to the State of California to cause birth defects or reproductive harm, and 2-mercaptobenzothiazole and beryllium which are known to the State of California to cause cancer. For more information, visit www.P65Warnings.ca.gov

***⚠ WARNING: This product can expose you to chemicals including diisodecyl phthalate which is known to the State of California to cause birth defects or reproductive harm, and 2-mercaptobenzothiazole which is known to the State of California to cause cancer. For more information, visit www.P65Warnings.ca.gov

Available through

GRAINGER
// // //