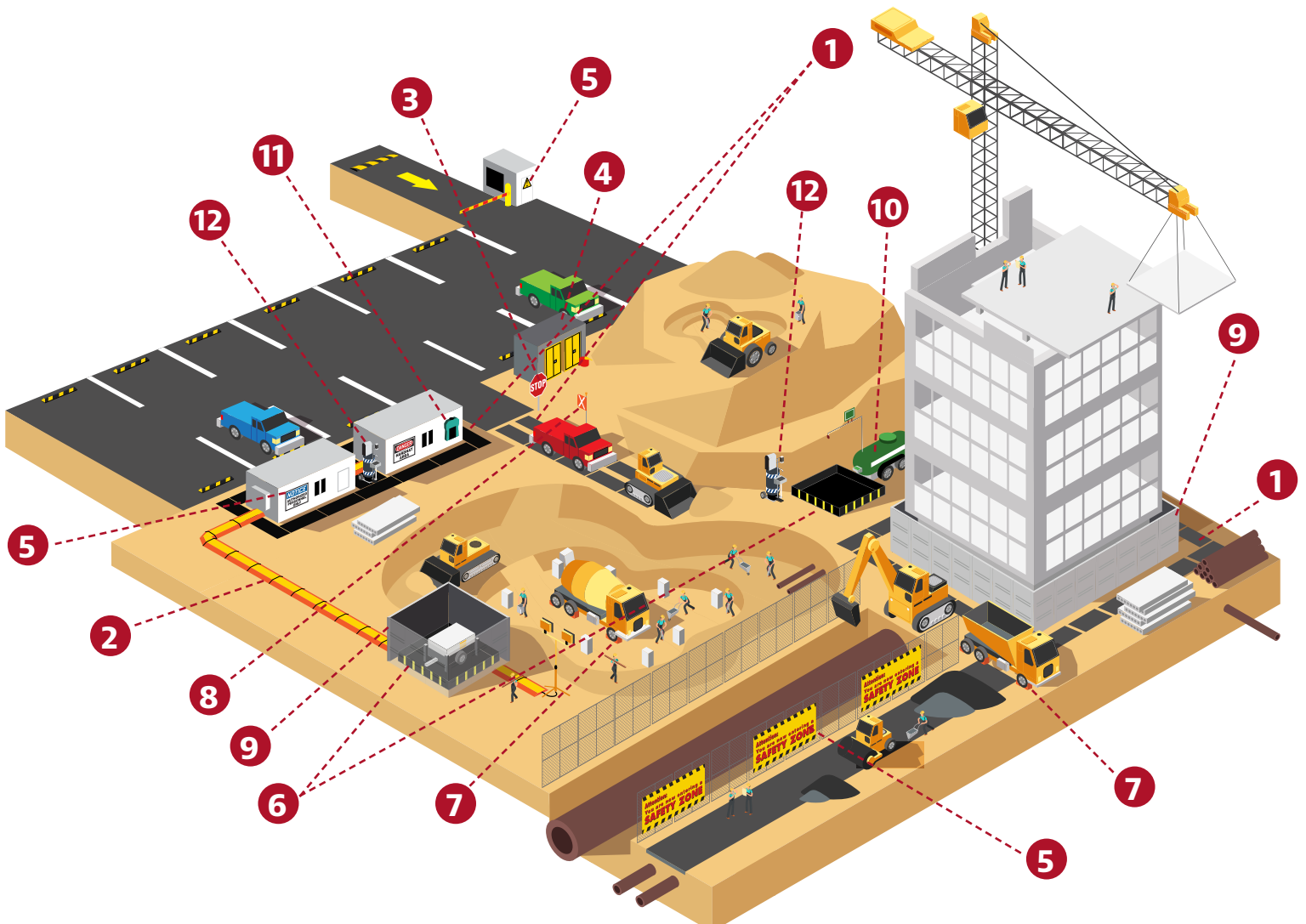


Make Your Construction Site JUSTRITE

Justrite Safety Group offers a collection of product solutions to help keep your job site safe



Start with the EssentialSM



- | | | | |
|---------------------------------|--|------------------------------------|---|
| 1 Ground Protection Mats | 4 Safety Cabinets & Safety Cans (in storage shed) | 7 Wheel Chocks | 10 Emergency Safety Shower/Eyewash |
| 2 Cable Protectors | 5 Signage & Identification | 8 Warning Whips | 11 Emergency Eyewash |
| 3 Traffic Control | 6 Spill Containment Berms | 9 Noise Protection Barriers | 12 Hand Wash Station |



Ground Protection

AlturnaMATS[®] and VersaMAT[®]

Matting protects sensitive turf while providing temporary access, roadways, or working platforms. Connect mats together to form roadways or walkways. Lasts longer than plywood—mats are weather resistant with no warping, splintering, or breaking. High load capacity of 120 tons.



AlturnaMATS[®]
surface tread



VersaMAT[®]
surface tread

- 48JP36 AlturnaMATS[®], black, 4 x 8 ft ▲*
- 48JP34 AlturnaMATS[®], black, 3 x 8 ft ▲*
- 48JP50 VersaMAT[®], black, 4 x 8 ft ▲*
- 48JP48 VersaMAT[®], black, 3 x 8 ft ▲*

Outrigger Crane Pads

Reduce risk of heavy equipment toppling with stabilizing outrigger pads, especially when working on soft surfaces such as grass or dirt. Protect against damage to wood, concrete, or asphalt surfaces.



- 45TX97 Outrigger Pad, 18" x 18" x 1", 45,000 lb load, black
- 45TX98 Outrigger Pad, 24" x 24" x 1", 60,000 lb load, black
- 45TX99 Outrigger Pad, 24" x 24" x 2", 62,000 lb load, black

Why Use Checkers Ground Protection Mats?



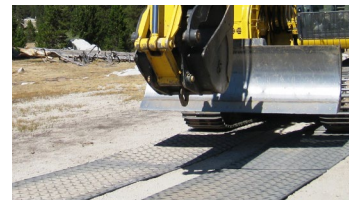
Protect grass and soft or sensitive ground from damage



AlturnaMATS add stability and traction in unstable or harsh conditions



Create safe walking paths and temporary sidewalks with VersaMAT



Lasts longer than plywood—won't warp, splinter or break

Noise Protection

Justrite QuietSite[™] Noise Reduction Barriers

Keep noise to a minimum when using noise-generating equipment. Premium panels include hook and loop fasteners and magnets for a seamless, secure link between panels. Mount panels on standard link fence, scaffolding, or steel frame; kits include a metal frame and base to create a freestanding barrier.

- 60YP59 QuietSite Premium Noise Reduction Barrier, 4 x 6 ft panel ▲*
- 60YP61 QuietSite Premium Noise Reduction Barrier, 4 x 8 ft panel ▲*
- 60YP62 QuietSite Premium Noise Reduction Barrier Kit, 4 x 6 ft panel ▲*
- 60YP63 QuietSite Premium Noise Reduction Barrier Kit, 4 x 8 ft panel ▲*



*▲ **WARNING:** This product can expose you to chemicals including lead, carbon black, chromium, nickel compounds, and sulfur dioxide, which are known to the State of California to cause cancer and birth defects or other reproductive harm. For more information go to www.P65Warnings.ca.gov.

†▲ **WARNING:** This product can expose you to chemicals including diisononyl phthalate, which is known to the State of California to cause cancer and birth defects or other reproductive harm. For more information go to www.P65Warnings.ca.gov.



Vehicle & Motion Safety

Wheel Chocks

Wheels should be chocked when a truck or trailer is parked at a worksite. The lightweight, impact-absorbing polyurethane construction provides a durable, safe solution to keep vehicles in place.



21ZF82	Heavy-Duty Wheel Chock, 95"-142" tire, 255 ton load ▲**
21ZF80	Heavy-Duty Wheel Chock, 65"-105" tire, 165 ton load ▲**
5NHU2	All-Terrain Wheel Chock; rubber pad cored bottom, 36"-46" tire, 150,000 lb load ▲**
5NHT6	All-Terrain Wheel Chock; rubber pad cored bottom, 28"-38" tire, 80,000 lb load ▲**
444C69	General-Purpose Wheel Chock, 32"-46" tire, 70,000 lb load ▲†
8Y016	General-Purpose Wheel Chock, 27"-35" tire, 30,000 lb load ▲†
MVHR626*	OSHA Caution Safety Sign: Driver Must Chock Wheels, 7" x 10"



Cable & Hose Management

Create safe passage for pedestrians and vehicles while protecting valuable electrical cables, cords and hose lines. Options available for high load capacity, multiple channels, hose protection, ADA compliance and overhead management.



32RX29	Linebacker®, 5 channel, yellow/orange ▲†
CHQUICKHOOK-O*	Quick Hook Overhead Hanging Cable Management ▲**
32RX17	Guard Dog® General Purpose ADA, 5 channel, orange/blue ▲†
4UEA1	Diamondback® Hose Bridge System for 4.5" line, yellow ▲†

▲▲ WARNING: This product can expose you to chemicals including carbon black, which is known to the State of California to cause cancer and birth defects or other reproductive harm. For more information go to www.P65Warnings.ca.gov.

†▲ WARNING: This product can expose you to chemicals including acrylonitrile and styrene, which are known to the State of California to cause cancer and birth defects or other reproductive harm. For more information, visit www.P65Warnings.ca.gov.

†▲ WARNING: This product can expose you to chemicals including carbon black, titanium dioxide, formaldehyde, and benzyl butyl phthalate, which are known to the State of California to cause cancer and birth defects or other reproductive harm. For more information, visit www.P65Warnings.ca.gov.

††▲ WARNING: This product can expose you to chemicals including isopropylidenediphenol, methylene chloride, which is known to the State of California to cause cancer and birth defects or other reproductive harm. For more information go to www.P65Warnings.ca.gov.

Warning Whips

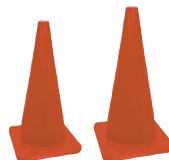
Warn others of a vehicle's presence—Checkers' warning whips provide the highest level of visibility and reliability in any weather or working condition. Available in a variety of sizes, flag options, lighting options and mounting styles. All-purpose include lighting, are more robust, and intended for more rugged environments.



5UYK4	General-Purpose Warning Whip, non-lighted, 5 ft with hex base, 12" orange flag with white reflective X ▲††
5UYK6	General Purpose Warning Whip, lighted, 5 ft with hex base, 12" orange flag with white reflective X ▲††
5UYK8	General Purpose Warning Whip, non-lighted, 8 ft with hex base, 12" orange flag with white reflective X ▲††
5UYL0	General Purpose Warning Whip, lighted, 8 ft with hex base, 12" orange flag with white reflective X ▲††
AP8.12OY.A*	All-Purpose Warning Whip, non-lighted, 8 ft with RCA plug, 12" orange flag with yellow X ▲††
AP10.12OY.A*	All-Purpose Warning Whip, lighted solid amber Rocket II LED, 10 ft with RCA plug, 12" orange flag with yellow X ▲††

Traffic Control

Traffic Cones



FBC216*	▲▲▲ 28"H
FBC219*	▲▲▲ 36"H

A-Frame Plastic Barricade



FBA618*	Type 1 Reflective, 40"H x 8 ft W
FBA629*	Type 2 Reflective, 40"H x 8 ft W

Traffic Signs



MR1124*	24" x 24"
---------	-----------

††▲ WARNING: This product can expose you to chemicals including nickel compounds, which is known to the State of California to cause cancer and birth defects or other reproductive harm. For more information, visit www.P65Warnings.ca.gov.

▲▲▲ WARNING: This product can expose you to chemicals including lead, which are known to the State of California to cause cancer and birth defects or other reproductive harm. For more information go to www.P65Warnings.ca.gov.

*Order through Grainger Sourcing

Fire Safety

Safety Cans

Protect workers and reduce the risk of fire and explosion when pouring and storing flammable liquids. OSHA requires the use of approved safety cans for transfer, storage and dispensing of gasoline, diesel, and other flammable liquids.



Safety Can Color Key

Red - Gasoline
Blue - Kerosene
Yellow - Diesel
Green - Oil



Type I Safety Cans — include funnel

- 3NKR5 Eagle Type I Safety Can, 5 gallon, red ▲**
- 3NKR6 Eagle Type I Safety Can, 5 gallon, yellow ▲**
- 13M473 Justrite Type I Safety Can, 5 gallon, red

Type II Safety Cans — include metal hose

- 3NKT9 Justrite Type II AccuFlow™ Safety Can, 5 gallon, 1" hose, red
- 13M486 Justrite Type II AccuFlow™ Safety Can, 5 gallon, 5/8" hose, yellow
- 13M490 Justrite DOT Type II AccuFlow™ Safety Can, 5 gallon, 5/8" hose, red

Outdoor Ashtrays

For safe collection of cigarette butts outdoors, unique designed receptacles keep areas clean looking while reducing the risk of fire.

Justrite Original Smoker's Cease-Fire®
Cigarette Butt Receptacles

- 3RYZ6 4 gallon, polyethylene with galvanized steel bucket, deco black
- 3RYZ8 4 gallon, polyethylene with galvanized steel bucket, pewter gray
- 3RYZ5 4 gallon, polyethylene with galvanized steel bucket, adobe beige



Eagle SafeSmoker™ Cigarette Receptacle

- 2RB28 5 quart, HDPE with galvanized steel bucket, black
- 4CU27 5 quart, HDPE with galvanized steel bucket, gray
- 2RB27 4 gallon, HDPE with galvanized steel bucket, black
- 4CU25 4 gallon, HDPE with galvanized steel bucket, gray

▲ **WARNING: This product can expose you to chemicals including lead, which are known to the State of California to cause cancer and birth defects or other reproductive harm. For more information go to www.P65Warnings.ca.gov.



Safety Cabinets

Safe, secure storage of fuels and flammables on site. A safety cabinet is needed when the job site has over 25 gallons of flammable or combustible liquids. Our safety cabinets meet OSHA and NFPA 30. Eagle Tower cabinets with legs can be moved easily with a forklift.



Justrite Sure-Grip® EX Safety Cabinets

- 1YND9 30 gallon, 2 manual-close doors, yellow
- 1YNE1 30 gallon, 2 self-close doors, yellow ▲**
- 1YNE4 45 gallon, 2 manual-close doors, yellow
- 1YNE5 45 gallon, 2 self-close doors, yellow ▲**

Eagle Flammables Safety Cabinets

- 55EA93 30 gallon Tower, 2 manual-close doors, yellow
- 55EA89 30 gallon Tower, 2 self-close doors, yellow ▲**
- 55EC04 45 gallon, 2 manual-close doors, yellow
- 55EC01 45 gallon Tower, 2 self-close doors, yellow ▲**

Paint Safety Cabinets for storing oil-based paint, aerosol cans, and paint cleaners

- 1YNE2 Justrite Sure-Grip® EX Combustibles Safety Cabinet, 40 gallon, 2 manual-close doors, red
- 55EC33 Eagle Paint and Ink Aerosol Can Safety Cabinet, 30 gallon, 2 manual-close doors, yellow

Oily Waste Can

As per OSHA, all oily rags shall be put directly in fire resistant covered containers until removed from worksite. Options for chemical compatibility.



Justrite Metal Oily Waste Cans

- 2AX55 6 gallon, foot-operated, self-closing cover, red
- 3AD94 10 gallon, foot-operated, self-closing cover, red

Eagle Poly Oily Waste Cans

- 5U737 6 gallon, hands-free operation, self-closing lid, red
- 5U738 14 gallon, hands-free operation, self-closing lid, red

Safety Signs



MCHL231* 10" x 14" MSMK136* 10" x 14"

*Order through Grainger Sourcing

Worker Safety

Portable Emergency Eyewashes

Self-contained eyewash stations are ideal where continuous water isn't available—no plumbing needed. ANSI-compliant.

15GEW



61HZ58

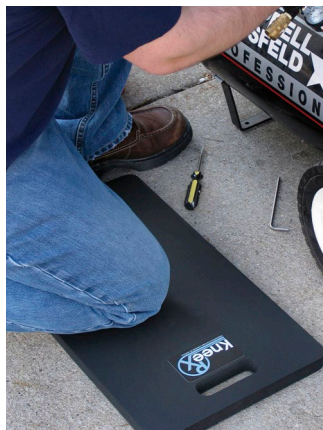
61HZ56



- 61HZ56 Portable OptiWash® Gravity Fed Eyewash, 10 gallon
- 61HZ58 Portable Gravity Fed Eyewash, 16 gallon
- 15GEW* Portable, Self-Contained Emergency Eyewash, pressurized, 15 gallon ▲†
- OPT50* Handheld Drench Hose for 15GEW
- ADDR4PKUS* Additive Solution for portable eyewashes; USA version
- ADDR4PKCAN* Additive Solution for portable eyewashes; Canada version
- MFSD927* Emergency Safety Sign: Eye Wash Station - Keep Area Clear, 10" x 14"

Knee RX™ Kneeling Mats

Reduce strain on knees and lower back in extreme kneeling applications. Pads provide a comfortable work surface for extreme kneeling applications such as gravel, asphalt, concrete, dirty/oily surfaces, tile & wood flooring, metal grating, and grass. Eliminates the hassle and discomfort of wearing knee pads. Knee RX HD features a heavy-duty rubber bottom surface for long-lasting wear in the roughest environments.



- 950S1214BL* 950 Knee RX Kneeling Mat, 12" x 14", black ▲**
- 2HNV9 950 Knee RX Kneeling Mat, 12" x 22", black ▲**
- 950S4122BL* 950 Knee RX Kneeling Mat, 12" x 22", black; pack of 4 ▲**
- 2HNW1 951 Knee RX HD Kneeling Mat, 12" x 22", black ▲**
- 951S4122BL* 951 Knee RX HD Kneeling Mat, 12" x 22", black; pack of 4 ▲**

Hughes Mobile Hand Washing Station

Prevent the spread of germs, in any location. This portable, self contained station features a 30 gallon tank, foot activation, and soap and paper towel dispensers. Fill easily with a garden hose.

HW40K* Mobile Self-Contained Hand Washing Station ▲†



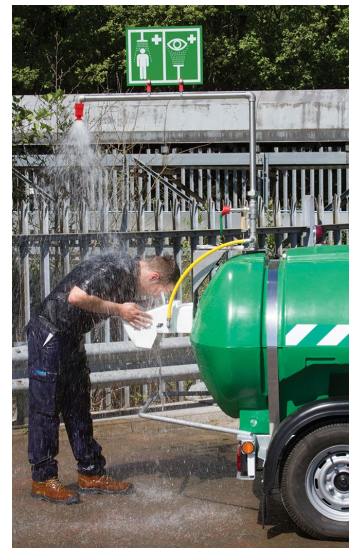
Mobile Emergency Safety Shower

Mobile showers with eye/face wash allow reliable, effective treatment in remote locations where water supply is unavailable.

Model 40K45G is ideal for quick rinse to span the gap, but cannot serve as the only source for shower and eyewash. Model 34RU05 has a 528 gallon tank with Integral immersion heater, heavy-duty galvanized trailer, and is ANSI-compliant.



40K45G



34RU05

- 40K45G* Mobile Self-Contained Emergency Safety Shower, 30 gallon ▲†
- 34RU05 Mobile Self-Contained Emergency Safety Shower, 528 gallon, 110V GP ▲†
- MFSD929* Emergency Safety Sign: Safety Shower - Keep Area Clear, 10" x 14"



▲▲ **WARNING:** This product can expose you to chemicals including di-2-ethylhexyl phthalate and/or diisononyl phthalate which is known to the State of California to cause cancer, birth defects or reproductive harm. For more information, visit www.P65Warnings.ca.gov.

† **WARNING:** This product can expose you to chemicals including lead, which are known to the State of California to cause cancer and birth defects or other reproductive harm. For more information go to www.P65Warnings.ca.gov.



Signage & Identification

Lockout Tags

OSHA compliant tag identifies the lockout situation and person at risk.



48RU14
25/pk



MLT407*
25/pk

Safety Tags By-The-Roll

Tags By-The-Roll keep a large quantity of tags readily available and organized in a disposable dispenser.



TAR121* 250/roll



TAR160* 250/roll



TAR166* 250/roll



Custom Signs Made Easy... Made Fast

Signs, tags, banners, and more
Contact us for full details



TAR711* 100/Roll



TAR111* 250/roll

Status Alert Tag Holders

Insert, enclose, and contain your status alert tags in a secure tag holder system.



TSS902*
Secure-Status
Tag Holder



TSS801*
Scaffold Status
Tag Holder.
Includes default message:
Do Not Use Scaffold Or
Climber

⚠️ WARNING: Cancer -- www.P65Warnings.ca.gov

RAMS Communication Center

Risk Assessment Management System displays important documents and safety information in one centralized location. Molded plastic free-standing board stand, 88"H x 74"W x 40"D.



PBR101YL*
RAMS Board Communication
Centers, yellow

STOPOUT® Lockout Kits

5S Boards for Lockout Tagout helps workers instantly recognize when an item is in use or needs to be returned.

KST300*
6-Padlock STOPOUT®
Standard Lockout
Centers - Combo Kit.
27"H x 54"W



KST301*
12-Padlock STOPOUT®
Deluxe Lockout
Centers - Combo Kit.
40"H x 37"W



⚠️ WARNING:
Cancer and Reproductive Harm
-- www.P65Warnings.ca.gov

PPE ID chart

Help employees understand personal protective equipment requirements on the jobsite. 24"H x 18"W chart with label booklet of common 2" x 2" PPE images.



PPE248*
Safety Sign:
PPE-ID™ Chart &
Label Booklet Kit

Hard Hat Labels & IDs



LHTL251*
ICE Hard Hat Label,
1.5" x 6", 5/pk

LHTL800*
Hard Hat ID/Badge
Holders, 10/pk





Signage & Identification

Signs & Banners

Safety Signs



476L90

10" x 14"



MADM714*

10" x 14"



MPPG663*

10" x 14"



ECRT533MBM* ⚠️

⚠️ **WARNING:** Cancer and Reproductive Harm -- www.P65Warnings.ca.gov



MCRT135*

10" x 14"

MCRT106*

14" x 20"



MADM014*

10" x 14"



479U67

18" x 24"



MPPA005*

10" x 14"



476K31

18" x 24"



476J54

18" x 24"

Fence-Wrap™ Mesh Gate Screens, 4 ft x 6 ft



FBW202* ⚠️



FBW201* ⚠️

⚠️ **WARNING:** This product can expose you to chemicals including arsenic, nickel compounds, which are known to the State of California to cause cancer, and cadmium, lead, which are known to the State of California to cause cancer and birth defects or other reproductive harm. For more information go to www.P65Warnings.ca.gov.

*Order through Grainger Sourcing

Job Site Start-Up Kit

All the sign and identification products needed for contractors starting new projects. Includes top-selling products suited specifically for construction sites. Kit contents are not trade-specific, making them perfect for any type of construction project.



CSK103* ⚠️ Job Site Start-Up Kit

Kit contents:

- 20 Contractor Preferred Corrugated Plastic Signs - 18" x 24" - 2/ea
- 1 OSHA Caution Tags By-The-Roll: Blank - 250/rl
- 1 OSHA Danger Tags By-The-Roll: Do Not Operate - 250/rl
- 1 OSHA Danger Safety Label: High Voltage - Keep Away
- 1 NFPA Blank Placard & Placard Kit
- 1 Self-Laminating Helmet Decal: ICE
- 1 Plastic Barricade Tape: Caution
- 1 Hard Hat Sticker: Country Flag
- 1 OSHA Danger Tags By-The-Roll: Blank - 250/rl
- 1 NFPA Basket-Style Aluminum Center: Right-To-Know Station
- 1 Lockout Kit: STOP-OUT® Deluxe Lockout Kit
- 1 Plastic Barricade Tape: Danger
- 1 Potable Water Cooler Tape

⚠️ **WARNING:** Cancer and Reproductive Harm -- www.P65Warnings.ca.gov

Tilt-Adjust™ Roll-Up Signs: tilts for use in moderate winds. Signs and stand sold separately.



- FRC750* Roll-Up Sign Stand, Springless ⚠️
- FRC305MV* Roll-Up Construction Sign: BE PREPARED TO STOP, Mesh Vinyl, 36" x 36"
- FRC306MV* Roll-Up Construction Sign: FLAGGER AHEAD, Mesh Vinyl, 36" x 36"
- FRC308MV* Roll-Up Construction Sign: MEN WORKING, Mesh Vinyl, 36" x 36"

⚠️ **WARNING:** This product can expose you to chemicals including nickel compounds, which is known to the State of California to cause cancer, and lead, which is known to the State of California to cause cancer and birth defects or other reproductive harm. For more information go to www.P65Warnings.ca.gov.

Custom Signs... Made Easy... Made Fast

Signs, tags, banners, and more
Contact us for full details





Start with the EssentialSM



Spill Containment Berms

QuickBerm®

Secondary containment berms help meet EPA regulations and provide dependable spill control for leak-prone containers and equipment. Berms set up in minutes for quick response under emergency spill conditions.



- 32XU17 QuickBerm®, 745 gallon capacity, 10 ft W x 10 ft L x 12"H [†]△**
- 32XU18 QuickBerm®, 1075 gallon capacity, 12 ft W x 12 ft L x 12"H [†]△**
- 32XU07 Rigid-Lock QuickBerm®, 1075 gallon capacity, 12 ft W x 12 ft L x 12"H [†]△**

QuickBerm® Lite

Portable, versatile berm deploys quickly for emergency spill containment. Folds to a small size for easy storage.



- 3PUT1 QuickBerm® Lite, 119 gallon capacity, 4 ft W x 6 ft L x 8"H [†]△‡

[†]△ **WARNING: This product can expose you to chemicals including lead, which is known to the State of California to cause cancer and birth defects or other reproductive harm, and nickel, which is known to the State of California to cause cancer. For more information go to www.P65Warnings.ca.gov.

[†]△ **WARNING:** This product can expose you to chemicals including silica, crystalline and titanium dioxide, which are known to the State of California to cause cancer, methanol and toluene, which are known by the State of California to cause birth defects or other reproductive harm, and diisononyl phthalate, which is known to the State of California to cause cancer and birth defects or other reproductive harm. For more information go to www.P65Warning.ca.gov.

‡[†]△ **WARNING:** This product can expose you to chemicals including diisononyl phthalate and lead, which are known to the State of California to cause cancer and birth defects or other reproductive harm. For more information go to www.P65Warnings.ca.gov.

***[†]△ **WARNING:** This product can expose you to chemicals including diisononyl phthalate and lead, which are known to the State of California to cause cancer and birth defects or other reproductive harm. For more information go to www.P65Warnings.ca.gov.

††[†]△ **WARNING:** This product can expose you to chemicals including diisononyl phthalate and lead, which are known to the State of California to cause cancer and birth defects or other reproductive harm. For more information go to www.P65Warnings.ca.gov.

Make-A-Berm™ Kit

Make-A-Berm™ installs easily around existing equipment, in spill-prone areas, or where a standard shape berm won't fit.

- 28464* Make-A-Berm™ Custom Spill Containment Kit, 1.5"H x 50 ft L [†]△



Decontamination QuickBerm®

Multi-stage berm with washdown zones safely captures and contains contaminated solutions. Lightweight and portable, ideal for emergency hazmat response cleanup operations.



- 3PVH5 Decon QuickBerm®, 2-zone, 6 ft W x 10 ft L x 8"H [†]△***

Washdown QuickBerm®

Portable drive-through station captures contaminated water from vehicle and equipment wash down.



- 32XU26 Washdown QuickBerm®, 425 gallon capacity, 10 ft W x 18 ft L x 4"H [†]△††

Available through:



*Order through Grainger Sourcing