

ADA-Compliant Cable Protectors

Meeting Enhanced Federal Requirements for Municipalities, Military & Government Facilities

Enhanced ADA Enforcement Now in Effect

Recent updates to Americans with Disabilities Act standards include stricter enforcement and clearer requirements for cable protection equipment in public spaces.

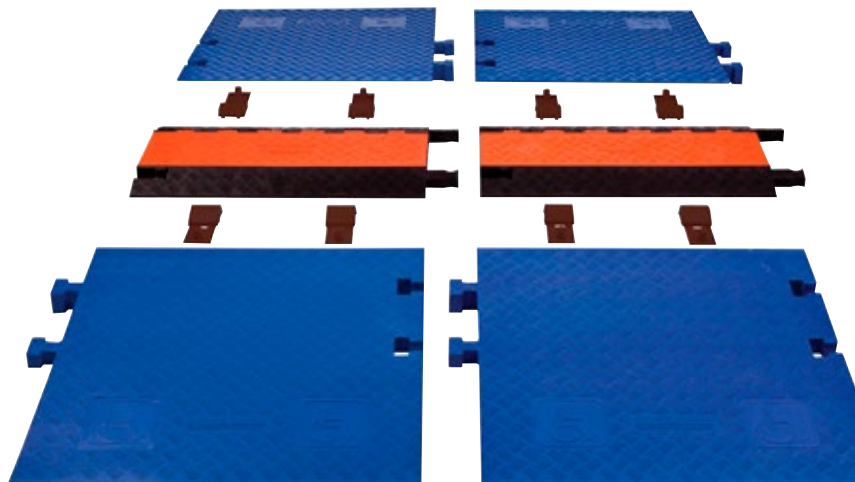
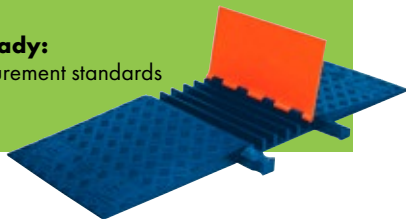
Regulatory Changes & Impact

Change/Requirement	Impact on Municipalities/States
Stricter enforcement of physical ADA standards	Increased need for compliant infrastructure
Clearer rules for equipment like cable protectors	Mandates use of ADA-compliant cable covers
Slope and surface requirements	Ensures safe passage for wheelchairs and mobility devices
Enhanced complaint and enforcement mechanisms	Greater risk of penalties for non-compliance



Compliance Benefits

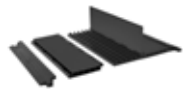
- **Avoid Legal Risks:** Prevent citations, fines, and lawsuits
- **Enhanced Public Safety:** Minimize trip hazards for all users
- **Inclusive Design:** Create barrier-free environments
- **Federal Contract Ready:** Meet government procurement standards



Featured ADA-Compliant Cable Protectors by Checkers

Advanced Modular System (AMS) - WSA Series

- Modular design for endless cable protection
- Interchangeable ADA ramps
- Blue side ramps for enhanced access



WSA-125-KIT3-HS



WSA-225-KIT1-HS



WSA-125-KIT1-HS



WSA-125-KIT2-HS

Yellow Jacket Series - YJ5 ADA Models

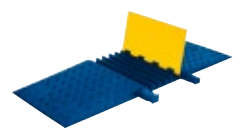
- All-in-one ADA cable protector
- Seamless recessed connectors
- Lightweight 18-inch sections
- Multiple color options



YJ5-125-ADA-Y/B



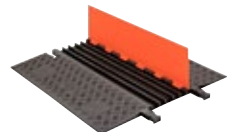
YJ5-125-ADA-B/B



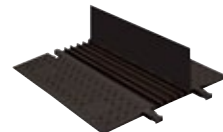
YJ5-125-ADA-Y/BLU

Guard Dog Series - GD5X75 Models

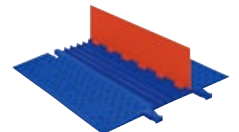
- Superior load capacity
- Durable construction
- Weather-resistant materials
- Professional color schemes



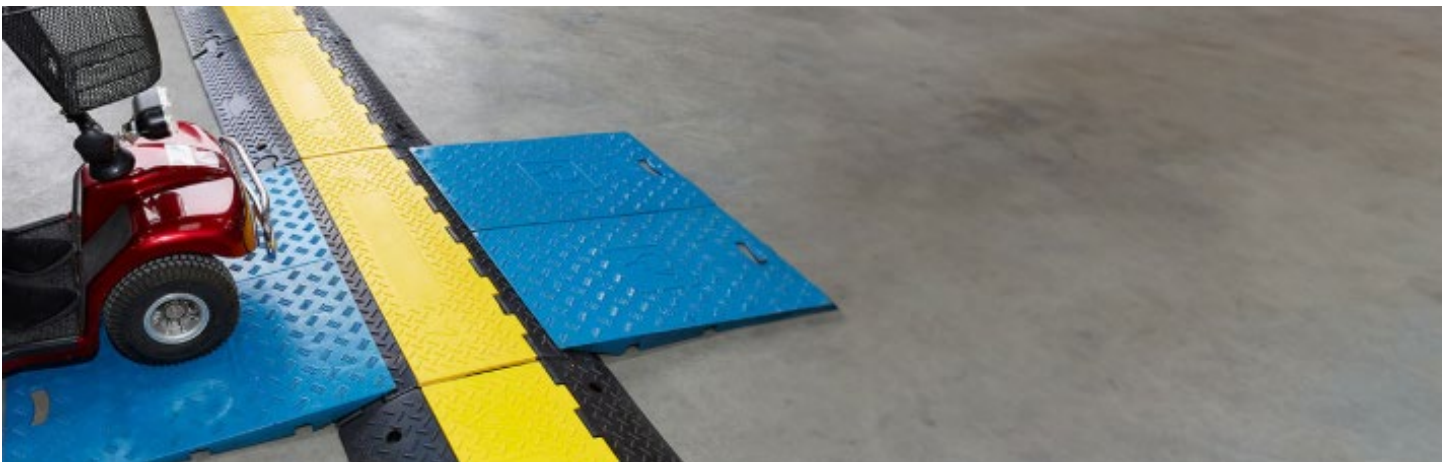
GD5X75-O/B



GD5X75-B/B



GD5X75-O/BLU



Ensure ADA Compliance Today

Don't risk penalties and accidents:
upgrade to [ADA-compliant ramps and cable protectors](#) now!

For more information, visit checkers.justrite.com
or contact custserv@justrite.com | (800) 798-9250

Distributed by: